

The Middle College

Dr. Algie C. Gatewood – Cascade Campus President

Mr. Gabe Hunter-Bernstein, M.A. – Cascade Campus Program Manager for Special Initiatives

Mr. Oscar Gilson, M.Ed. – Middle College Director

Mr. Damon Hickok, M.Ed. – Middle College Coordinator



**Portland
Community
College**

We're all about
your future.

What is the Middle College?

The Middle College exposes young people to the world of higher education, and offers them an opportunity to earn college credit while still enrolled in high school.

- Middle College students are considered part of the PCC mainstream, and study alongside regular PCC students.
- The program covers the cost of students' tuition, fees and books.
- Scholarship agreements help provide a clear path to a baccalaureate degree and beyond.



We're all about **your future.**

What is the Middle College?

- Cradle to career
- Moving from underperformance to high performance
- Closing the achievement gap
 - Improving academic performance
 - Improving HS graduation rates
 - Improving college-going rates
- Closing the belief gap
- Building a stronger, more prosperous community



**Portland
Community
College**

Cascade Campus

We're all about **your future.**



**Portland
Community
College**

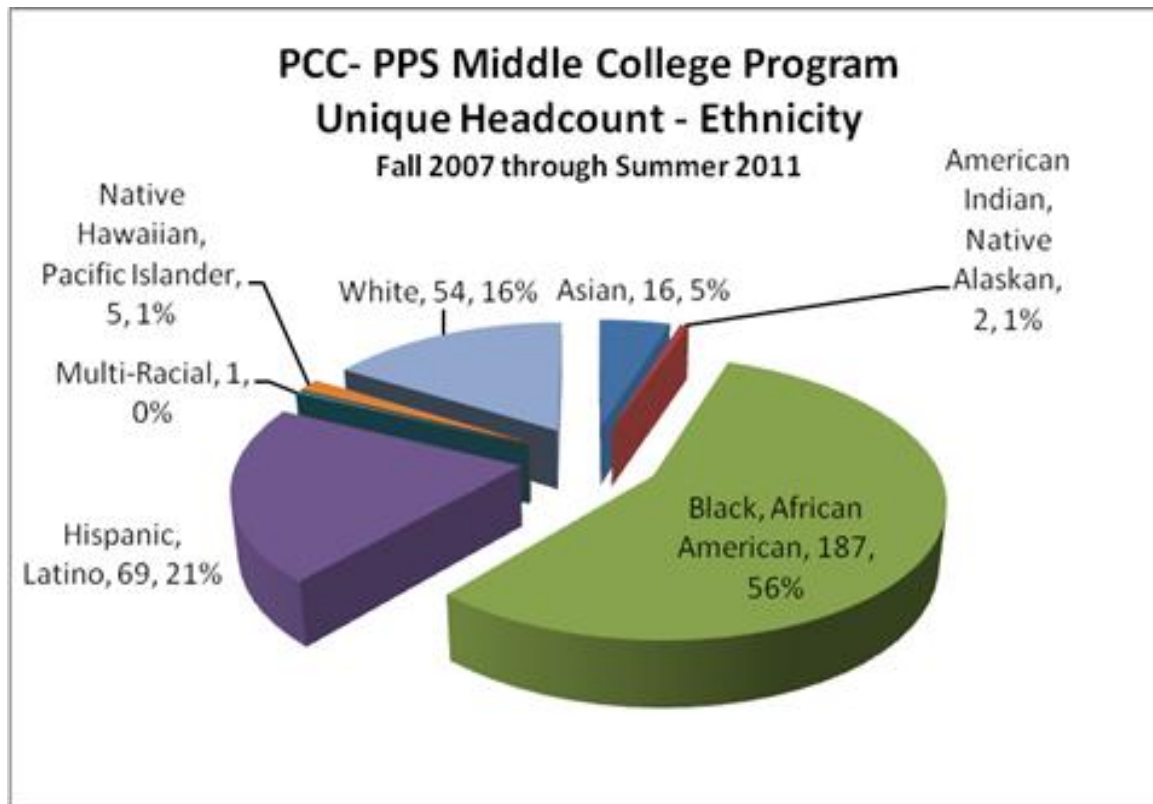
History of the Middle College

- GEAR-UP era (2004-2007)
 - Funded by federal grant
 - Limited, opt-in participation
- IGA era (2007-2011)
 - PCC/PPS partnership is formalized
 - Funded by PPS
 - Full-time coordinator is hired
 - Limited, opt-in participation
- Expansion era (2011-)
 - Program expanded to include all incoming JHS freshmen
 - Funded by PPS
 - Full-time director is hired
 - Scholarship partnerships established
 - Opt-in participation for upperclassmen



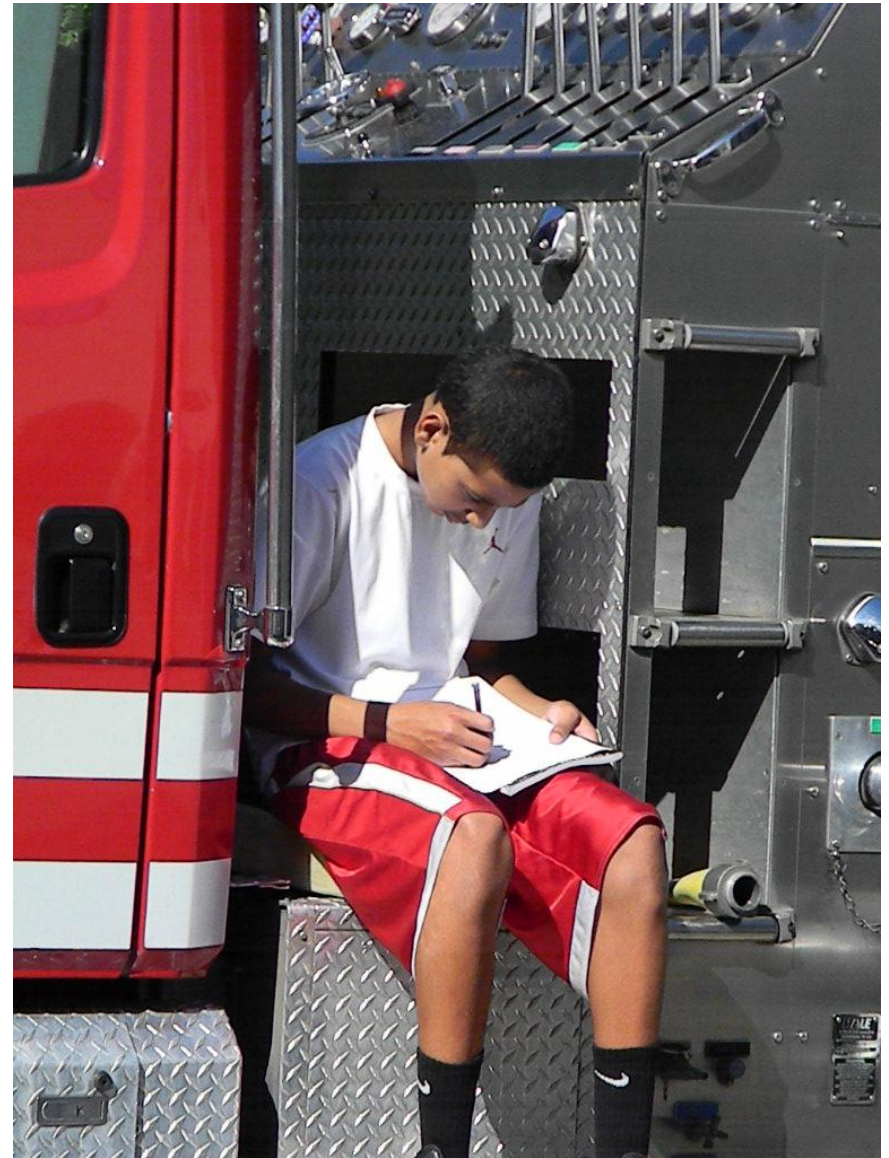
Who is the Middle College?

- The program is open to every student at Jefferson High School
 - Jefferson is the only majority-African American high school in Oregon
- Open enrollment – no selective recruiting
- 470 unduplicated students since 2004



Who is the Middle College?

- 95% of Middle College students are the first generation in their families to attend college
- 83% qualify for free or reduced-price lunch.
- 84% are students of color
- Middle College students reflect the population at JHS



We're all about **your future.**



Middle College Success

	Middle College	Statewide Average
Graduation Rate	96%	66%
College-going rate	70%	47%

We're all about **your future.**



Preserving the High School Experience ...



- Traditional HS activities at JHS
 - Sports
 - Clubs
 - Dances
- Specialized programs at JHS
 - Biotech
 - Jefferson Dancers
 - Video Production
 - Senior Inquiry

We're all about **your future.**



... While Acclimating to College Life

- Academies
- College readiness courses
- Double blocks of language arts for sophomores
- Early college campus experiences
 - Orientations
 - Speakers & performances
 - ASPCC activities, college clubs
- Learning to navigate a college campus

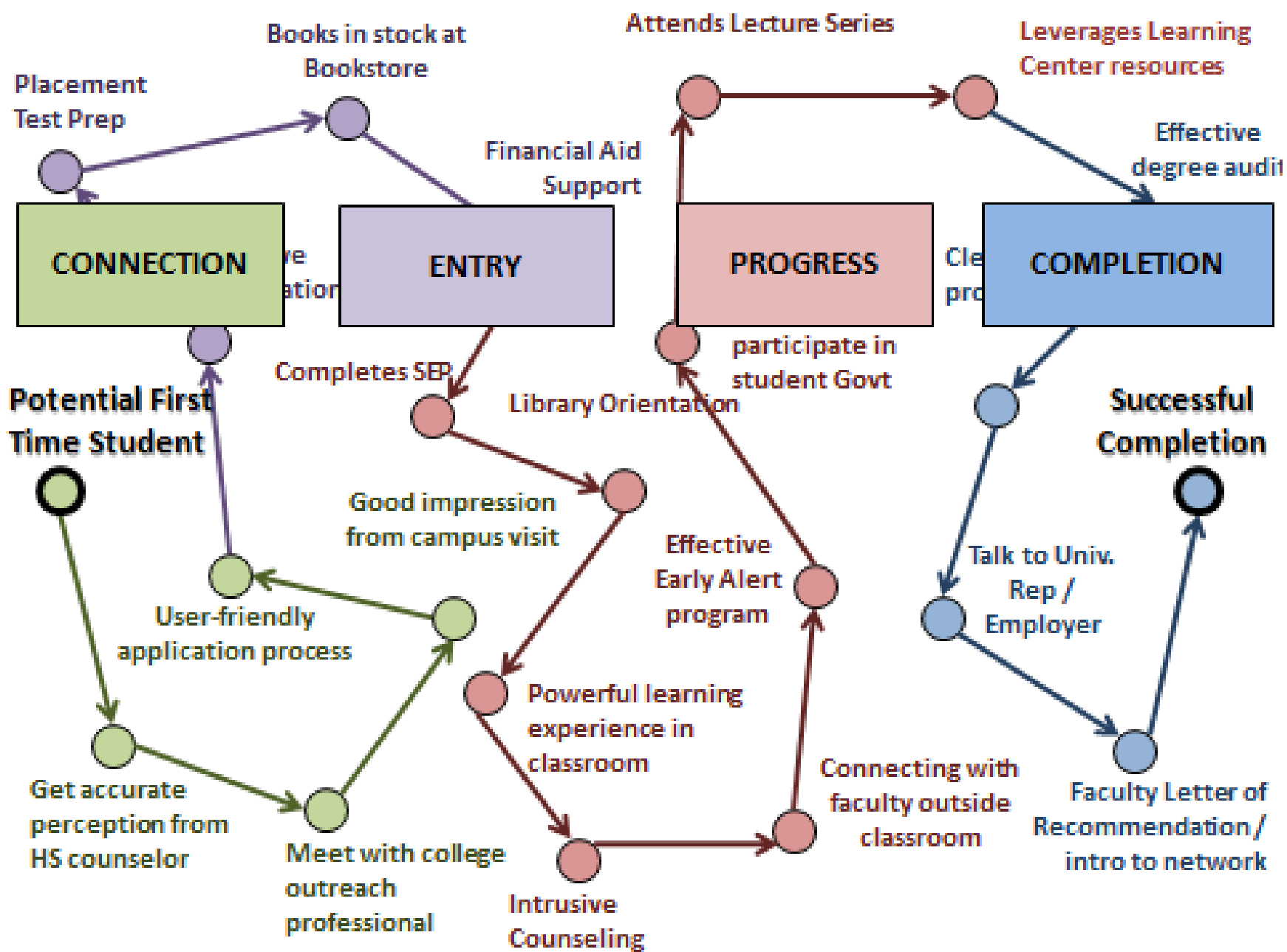
We're all about **your future.**

Self-Enhancement Inc.

- Successful existing community organization
- Tracks students from age 9 to 22
- Individual case management
 - Academic support
 - Counseling for individual and family issues
- Extracurricular activities
 - College visits
 - Performing arts
 - Community service



We're all about **your future.**



Source: "Leading Through the New Completion Agenda," Lone Star College System, 2011

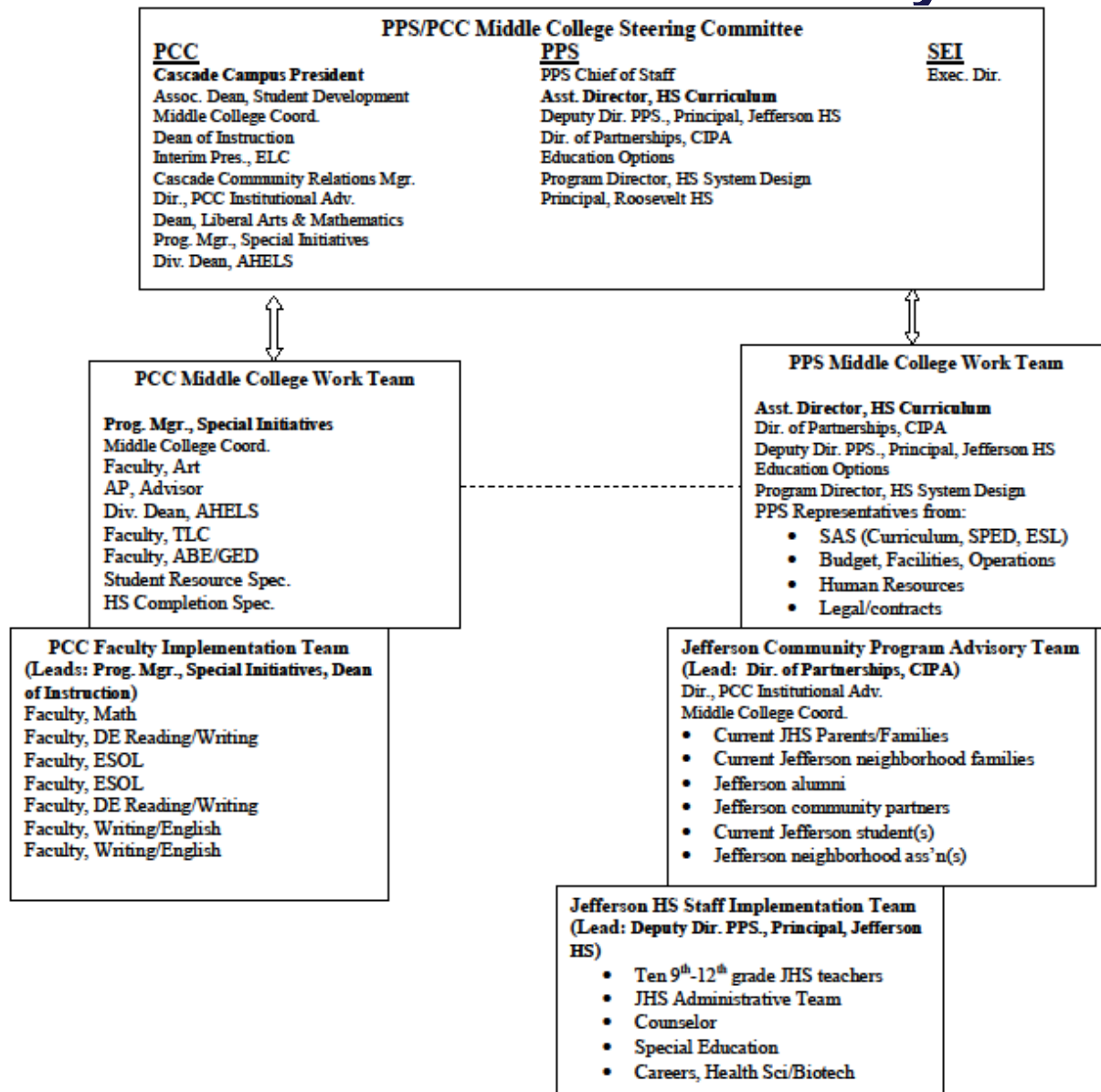
We're all about **your future.**



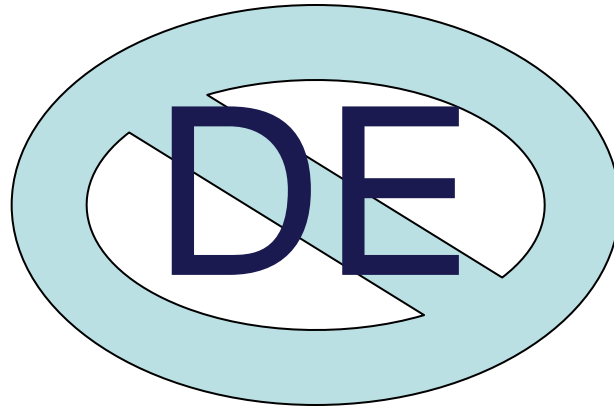
Support Services

- Wraparound services – Middle College Coordinator
 - Individual academic advising/case management
 - Mentorship
 - Orientation
 - Navigating college processes
 - Admissions
 - Registration
- Connection with PCC Services
 - Tutoring center
 - Library
 - Advising/Counseling

How Did We Get Ready?



Academic Readiness



- Preparation for collegiate-level coursework is JHS' responsibility
- Students placed via COMPASS assessment
- Limited number of Middle College students per class

After High School



We're all about **your future.**



After High School

- Clear path to postsecondary attainment
 - Associate's degree
 - One- or two-year professional certification
 - Baccalaureate degree
- Return on investment



We're all about **your future.**