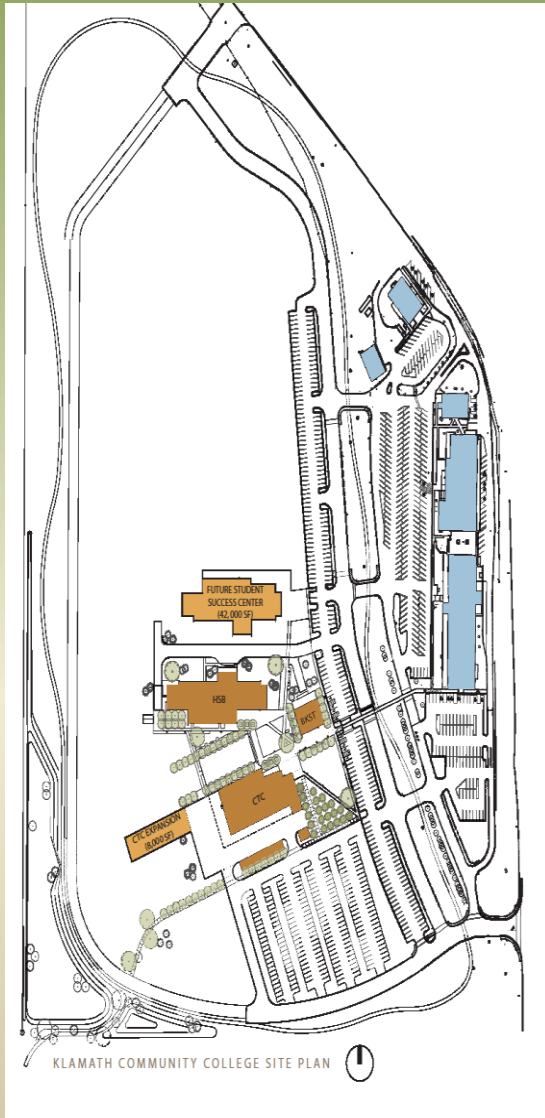


Klamath Community College

Student Success Center/Career Tech Expansion



Learning Resource Center Will Be Complimentary Design and will include:

- **34,500 Square Feet – Learning Resource Center to include Library**
- **7,200 Square Feet – General Classrooms**
- **8,000 Square Foot Expansion of Career Tech Building**

Classroom University Center

\$8 million request
40,000 sq. ft. building



Note: A successful voter approved bond in 2008 provides the matching funds for this project. Matching bond funds available through 2012.



Community Impact from Past Capital Projects:

•Yamhill Valley Campus

- Comprehensive college to meet the educational needs of Yamhill residents – includes college transfer and career and technical programs in health care, hospitality and tourism

•Health Sciences Classroom Complex

- Increase graduates in health professionals (nurses, dental assisting & hygiene, pharmacy tech., and health records)
- Partnership with OIT's Dental Hygiene Program. The Dental Clinic will serve 3200+ low income children/adults annually
- Increase economic vitality of region to attract high wage industries

Impact of the Classroom University Center:

- Provide local high demand university articulation options that will save student and tax payer dollars
- Raise the rate of residents obtaining a university education (Marion, Polk & Yamhill among the lowest in the state)
- Facility allows for:
 - Removal of outdated modulares; Updated classrooms/ University partner office spaces, and an Assessment Center

Umpqua Community College

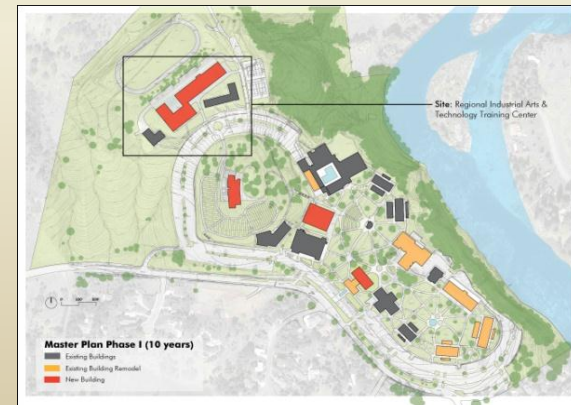
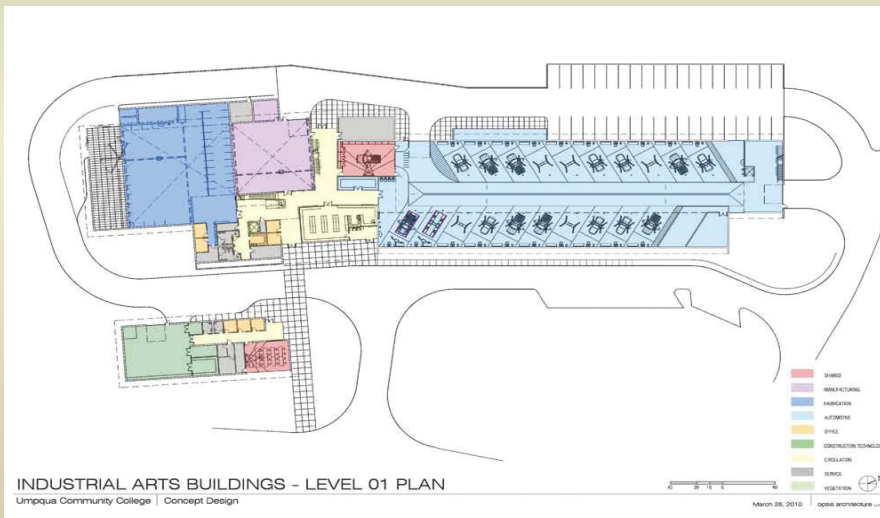
Regional Industrial Arts & Technology Training Center

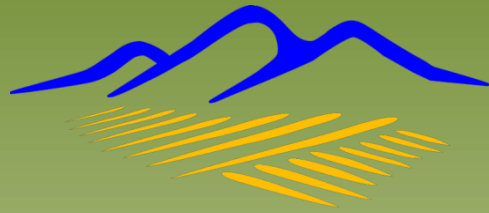
Facility includes:

- 69,508 sq. ft. Industrial Arts & Technology Training Center
- Program specific spaces and flexible lab/classroom space for automotive, welding/fabrication and construction technology

Funding:

Construction cost is \$19.4 million





Blue Mountain Community College

Animal Science Education Center

This center will train skilled workers for projected high-demand occupations in animal care; e.g., veterinary technician jobs in Oregon are projected to increase by 28% (2006-2016). This project builds on the strengths of BMCC's award-winning agriculture program.

Project partners include the Confederated Tribes of the Umatilla Indian Reservation, the City of Pendleton, and the Round-Up City Development Corporation.

Academic programs taught through the Center will include:

- Veterinary Technician A.A.S./A.S. degrees (large-animal emphasis)
- Farrier Science certificate
- Horse Management certificate



Clackamas Community College

The Clackamas Community College Advanced Industrial Technology Learning Center alleviates overcrowding, updates and increases the technology available to keep business, industry and students competitive . A hybrid facility incorporating light and heavy industrial classrooms, laboratories and flexible space to address industry changes and to increase the university transfer programs in technology and renewable energy. training for high school, college and incumbent workers and the improvement of horticulture and outdoor learning laboratories.

Clairmont Facility - Relocation of Science and Industrial Technology

Facility includes:

- 100,000 sq ft of combined light and heavy industrial classrooms and lab space.

Funding:

- \$8m state match with \$15.9m local capital bond -Vote on May 17, 2011



Lane Community College



Forum Building

\$11,250,000

XI-G Bond Request \$5,625,000

The Forum Building 17 is a three-story structure that was designed in 1968 to meet the specific spatial needs of a television program.

Lane Community Colleges will completely remodel the building, changing and adding to the interior layout with classrooms and laboratories constructed to meet LEED and ADA standards while conserving energy and meeting robust IT infrastructure.

The facility will host instructional activities in workforce training program, multi-media and graphic design, and academic technology courses for Career Readiness Certificates.

Central Oregon Community College

Central Oregon Community College needs an additional general purpose classroom to respond to enrollment increases and to house student success services. Credit enrollment has grown by over 100% in four-years, one of the nation's fastest growth rates.

**42,560 sq. ft.
\$14,224,792**

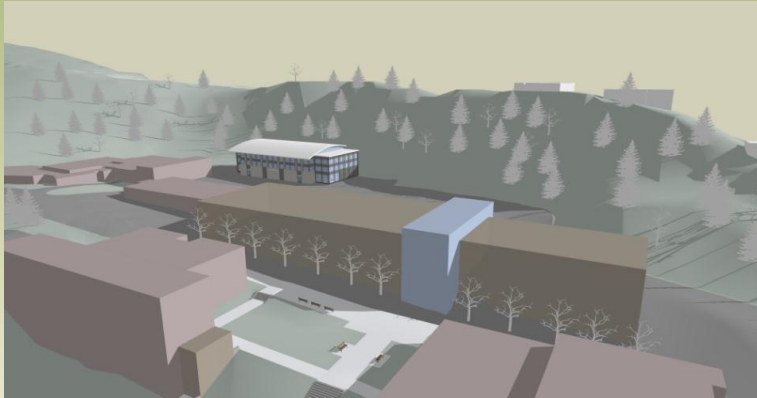


Need for building:

- to accommodate increased number of students because of 100% enrollment growth over past four years
- to ensure that COCC does not have to turn away 350-500 students each term for lack of classroom space
- to allow for adequate classroom capacity to deliver more cost effective instruction
- to expand accessibility and service to students with additional offices for both full and part-time faculty.
- to coordinate tutoring and advising services which have outgrown the spaced allocated in the basement of the library.

Clatsop Community College

Health and Wellness Center
Three stories - 24,900 sq. ft.
\$13,700,000



The current facility in which the health and wellness activities are located is scheduled for demolition. Due to the age of the building it is no longer safe to use.

A new health and wellness center will allow Clatsop Community College to continue to offer academic and community education programs in health and wellness and physical education.

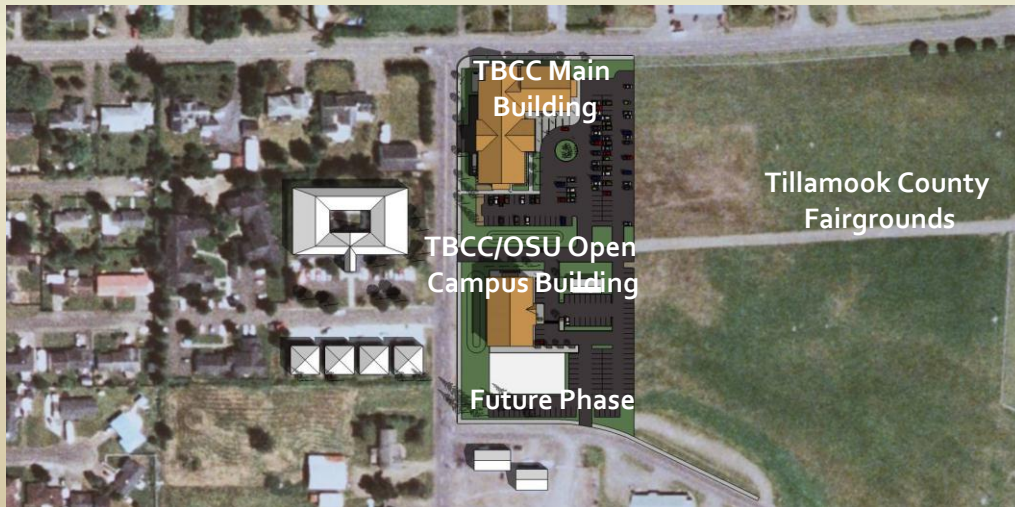
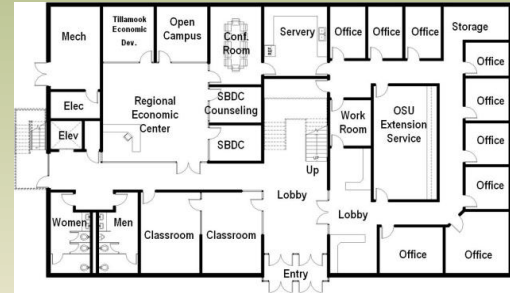
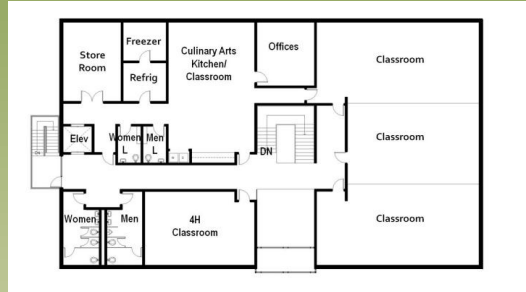
The facility will include:

- Classrooms
- Exercise rooms
- Faculty offices
- Equipment storage
- Gymnasium



Tillamook Bay Community College

OSU Open Campus Building



Career Technical Center

Key partners:

- Oregon State University Open Campus and Extension Service
- Regional Solutions (SBDC)
- Tillamook Economic Development

Facility includes:

- Commercial Kitchen for Culinary Arts Program
- 4-H Classroom
- SBDC Counseling Center
- Career Technical Classrooms

Funding:

- \$2 million match obtained toward \$4.2 million construction cost

Portland Community College

District Technology Strategic improvement request

To increase access to classes, enhance student services, and create modern learning environments across PCC's district by investing in technology.

Objectives on this request:

- Expand online classes and hybrid classes throughout Multnomah, Washington, Clackamas, Yamhill and Columbia counties.
 - *Currently more than 30% of our students rely on distance learning*
 - *Parking and emission goals would be met by more students taking online classes.*
- Add 1 million megabytes of service to desktops & devices due to demand for video/pictures
- Provide increasingly needed online student services 24/7/365
- Reduce telecommunication utility costs by leveraging existing data network infrastructure.
- Wire the culturally diverse Southeast Center as it becomes a comprehensive campus

Matching funds will come from PCC bond and other capital funds



Restore Gresham Campus Electrical Distribution System

THE NEED:

- 40-year-old system is unsafe
- Electrical outages disrupt classes
- Water entering main electrical rooms is dangerous
- Parts are no longer available
- Old oversized transformers waste electricity

THE SOLUTION:

- Replace direct buried cable
- Replace electrical distribution equipment
- Install new right-sized transformers
- Install drainage systems

FUNDING:

- Estimated construction cost: \$4 million
- Matching funds capital borrowed by MHCC